

本函檔號: XRL/2011/0220

通告

高鐵香港段 — 佐敦道之臨時交通管理措施

為配合高鐵香港段項目，港鐵公司將進行臨時行人天橋安裝工程。為減低對路面交通的影響，有關工程將於夜間進行。工程期間，佐敦道東行兩條慢綫須於 **2011年9月6日晚上11時至翌日早上5時30分** 臨時封閉；而佐敦道東行兩條快綫須於 **2011年9月9日早上2時30分至5時30分** 臨時封閉。屆時，駕駛人士仍然可使用佐敦道前往佐敦、連翔道及雅翔道，有關路段將設置適當交通指示牌，指導駕駛人士有關安排（詳情請參閱附圖一及附圖二）。

若上述臨時交通措施帶來任何不便，敬請見諒。如有任何查詢，歡迎致電港鐵工程項目熱綫 2993-3333。

項目傳訊經理

譚錦儀

(胡定嘉 胡定嘉 代行)

二零一一年九月二日

Our Ref.: XRL/2011/0220
2 September 2011

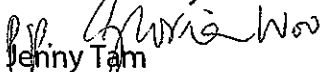
Notice

Express Rail Link – Temporary Traffic Arrangement at Jordan Road

To facilitate the construction of the Express Rail Link, erection of temporary footbridge will be carried out. In order to minimise the impact on road traffic, related works will be carried out at night. During the works period, two slow lanes of Jordan Road eastbound will be temporarily closed on **6 September 2011 from 11:00pm to 5:30am of the following day**; and two fast lanes of Jordan Road eastbound will be temporarily closed on **9 September 2011 from 2:30am to 5:30am** respectively. Motorists can still use Jordan Road to access Jordan, Lin Cheung Road and Nga Cheung Road. Appropriate signs will be erected to guide motorists (please refer to the attachment 1 and 2 for more details).

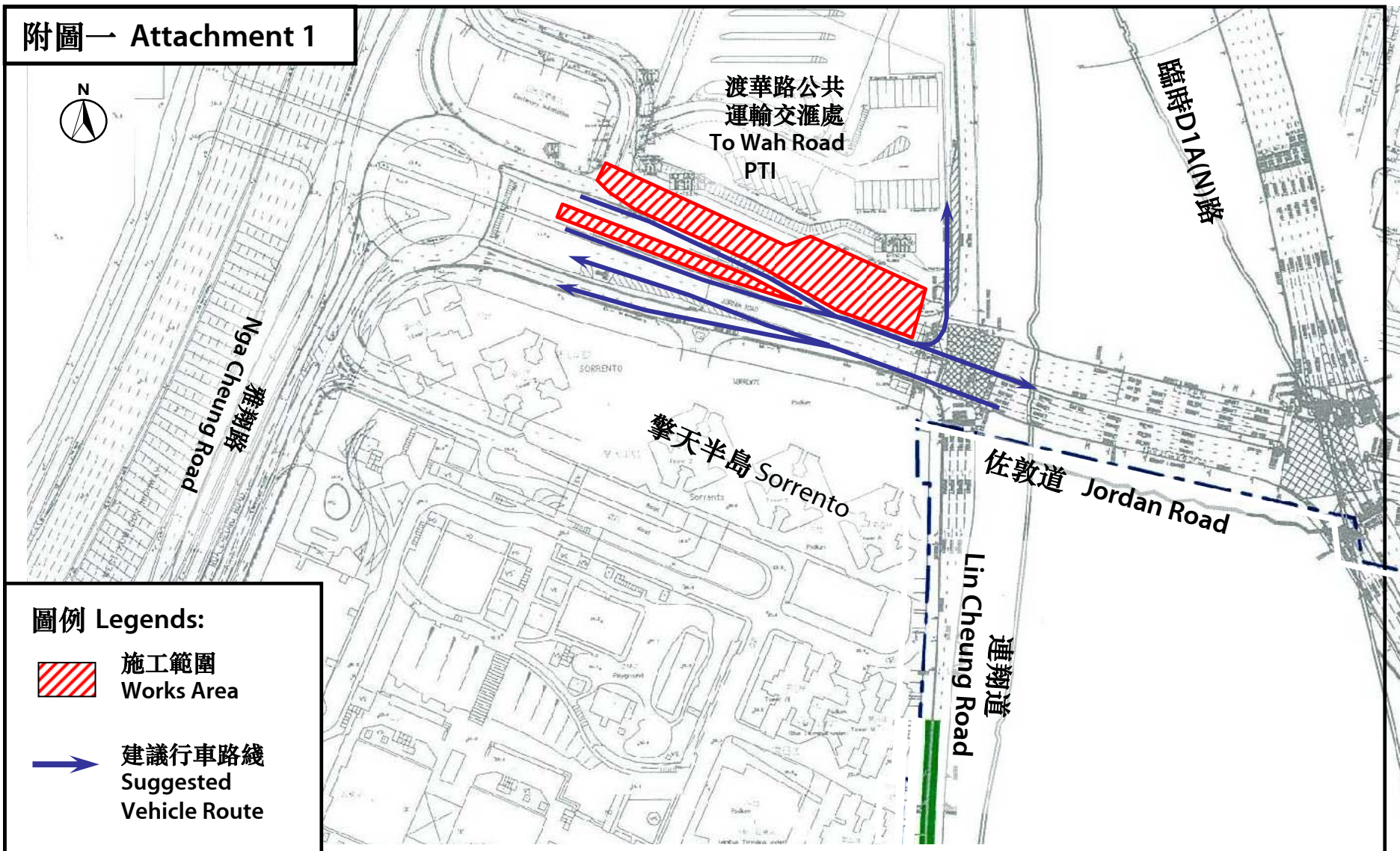
We apologise for any inconvenience caused. Should you have any enquiries, please contact the MTR Projects Hotline at 2993 3333.

Yours sincerely





Jenny Tam
Projects Communications Manager

附圖一 Attachment 1

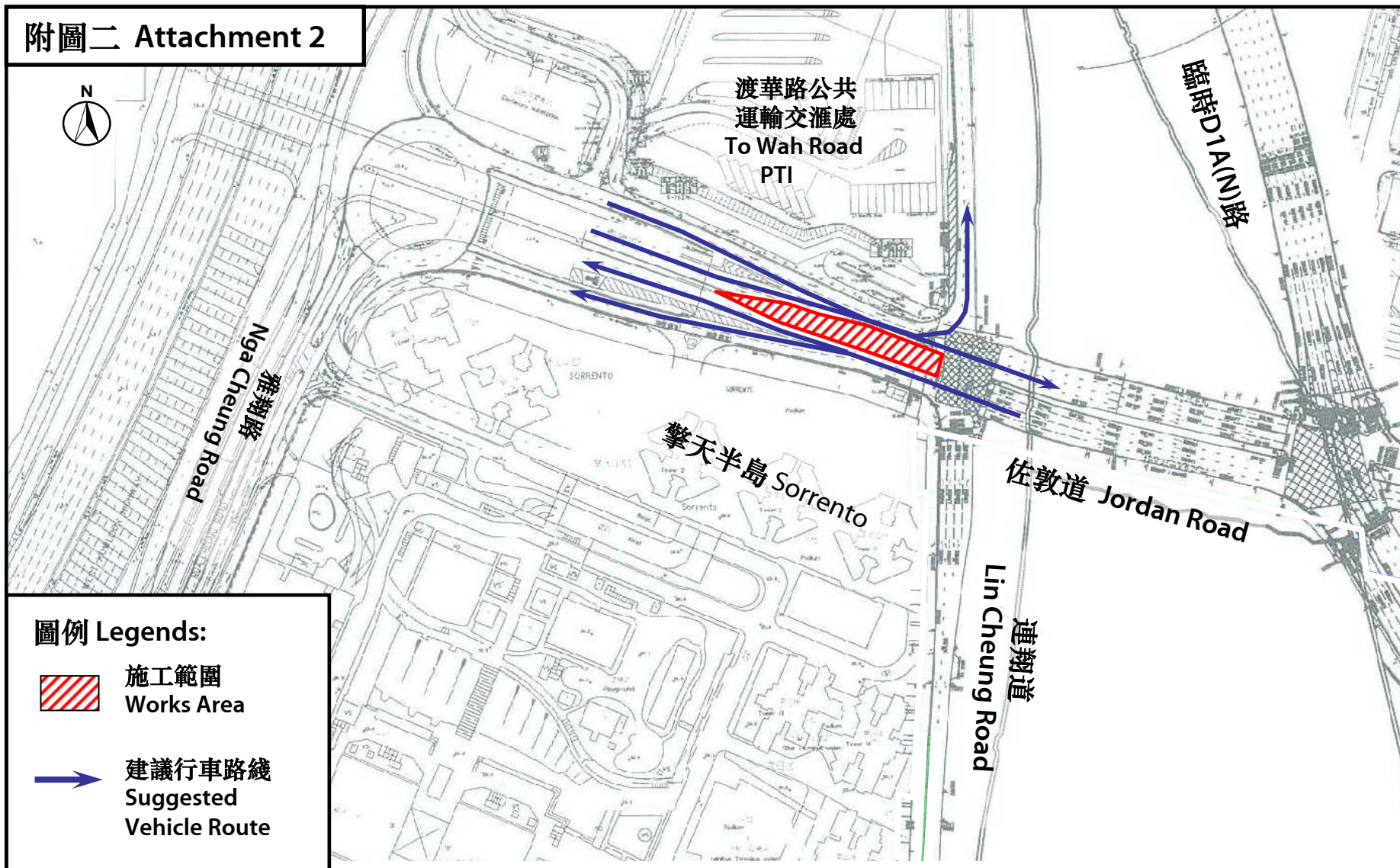


圖例 Legends:

-  施工範圍
Works Area
-  建議行車路線
Suggested
Vehicle Route

佐敦道之臨時交通管理措施 (由9月6日晚上11時至翌日早上5時30分)
Temporary Traffic Arrangement at Jordan Road
(From 6 September 2011, 11:00pm to 5:30am of the following day)

附圖二 Attachment 2



佐敦道之臨時交通管理措施 (由9月9日早上2時30分至早上5時30分)
Temporary Traffic Arrangement at Jordan Road
(9 September 2011, from 2:30am to 5:30am)